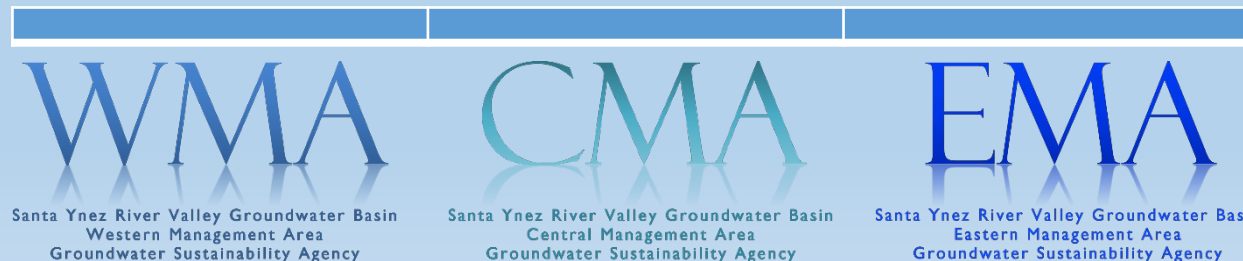


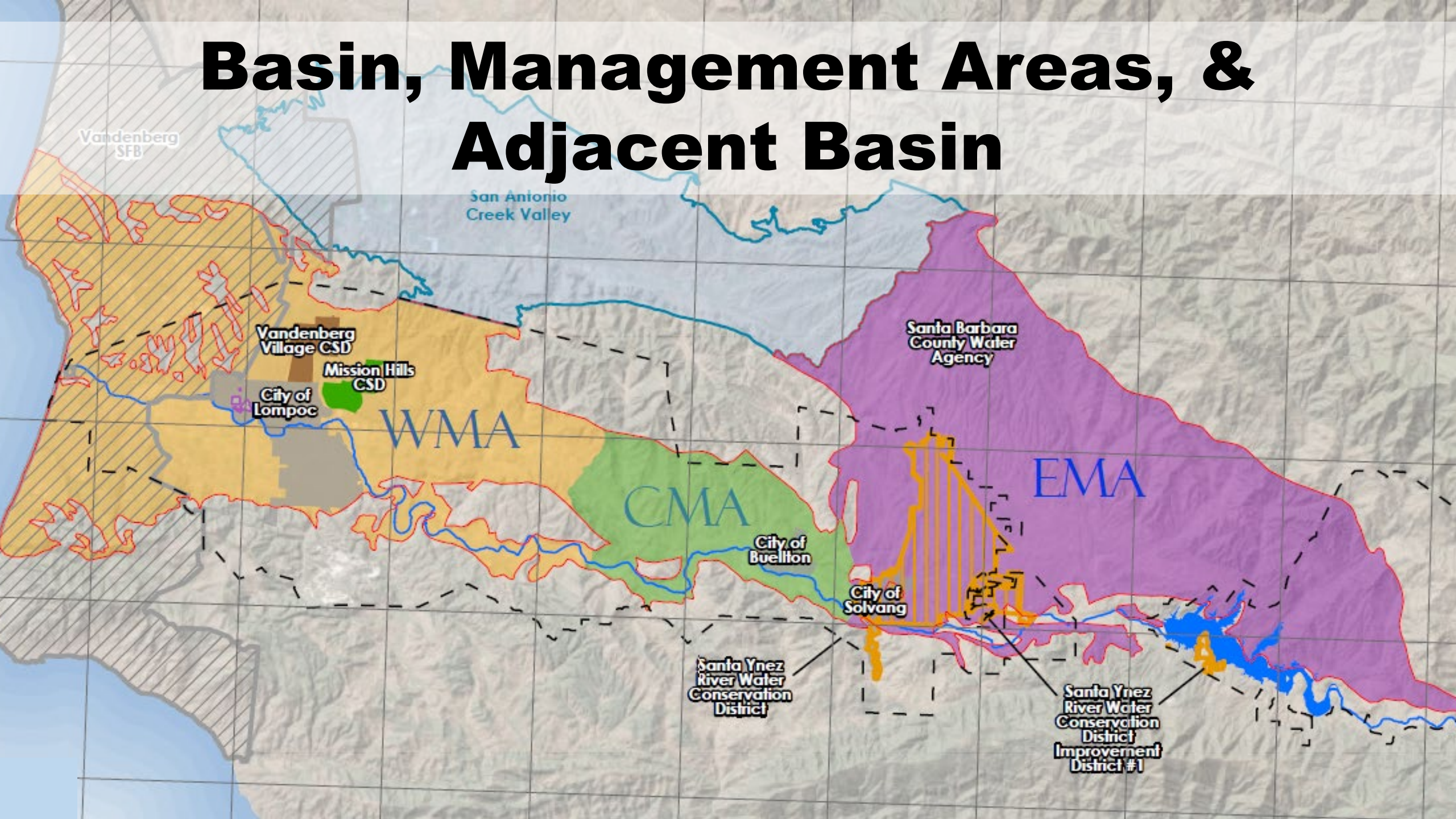
March 13, 2026

**JOINT SPECIAL MEETING WMA, CMA, EMA
Santa Ynez River Valley Groundwater Basin**

**Annual Report
Water Year 2025
Summary**



Basin, Management Areas, & Adjacent Basin



Annual Reporting

California Water Code [CWC] Section 10728:

On the **April 1 following the adoption of a groundwater sustainability plan** and annually thereafter, a groundwater sustainability agency shall submit a report to the department containing the following information about the basin managed in the groundwater sustainability plan:

- (a) Groundwater elevation data.
- (b) Annual aggregated data identifying groundwater extraction for the preceding water year.
- (c) Surface water supply used for or available for use for groundwater recharge or in-lieu use.
- (d) Total water use.
- (e) Change in groundwater storage.

*(Added by Stats. 2014, Ch. 346, Sec. 3. (SB 1168)
Effective January 1, 2015.)*

**Covers Previous Water Year: WY 2025
(October 2024-September 2025)**

Annual Report Sections:

Executive Summary

1 General Information

2 Basin Conditions

3 Groundwater Hydrographs and Contours

4 Water Use and Surface Water

5 Groundwater Storage

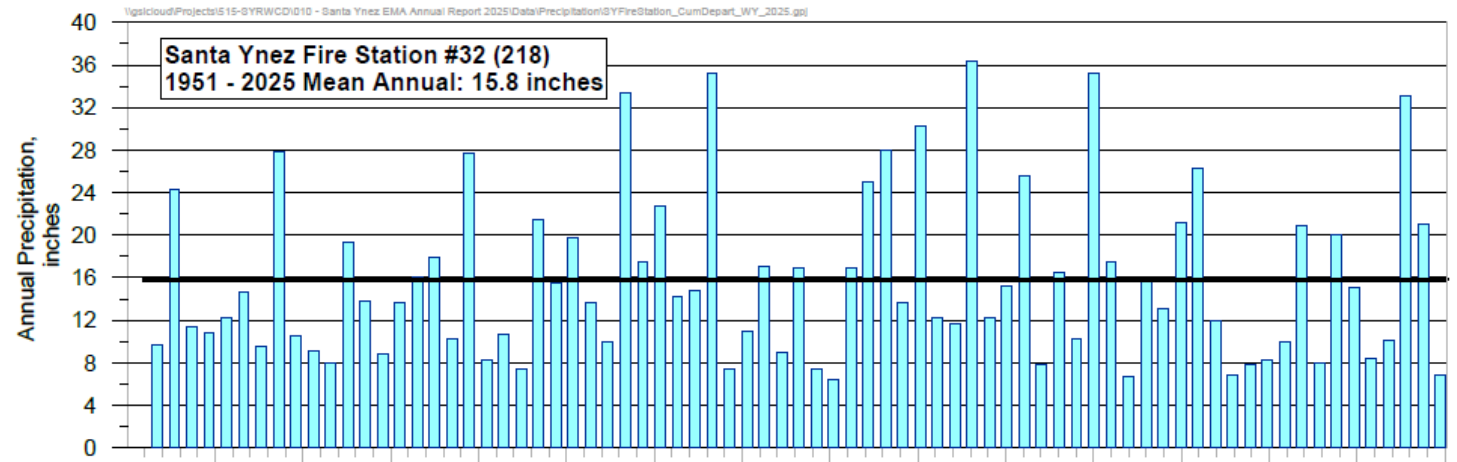
6 Progress Towards GSP Implementation and Sustainability

7 References

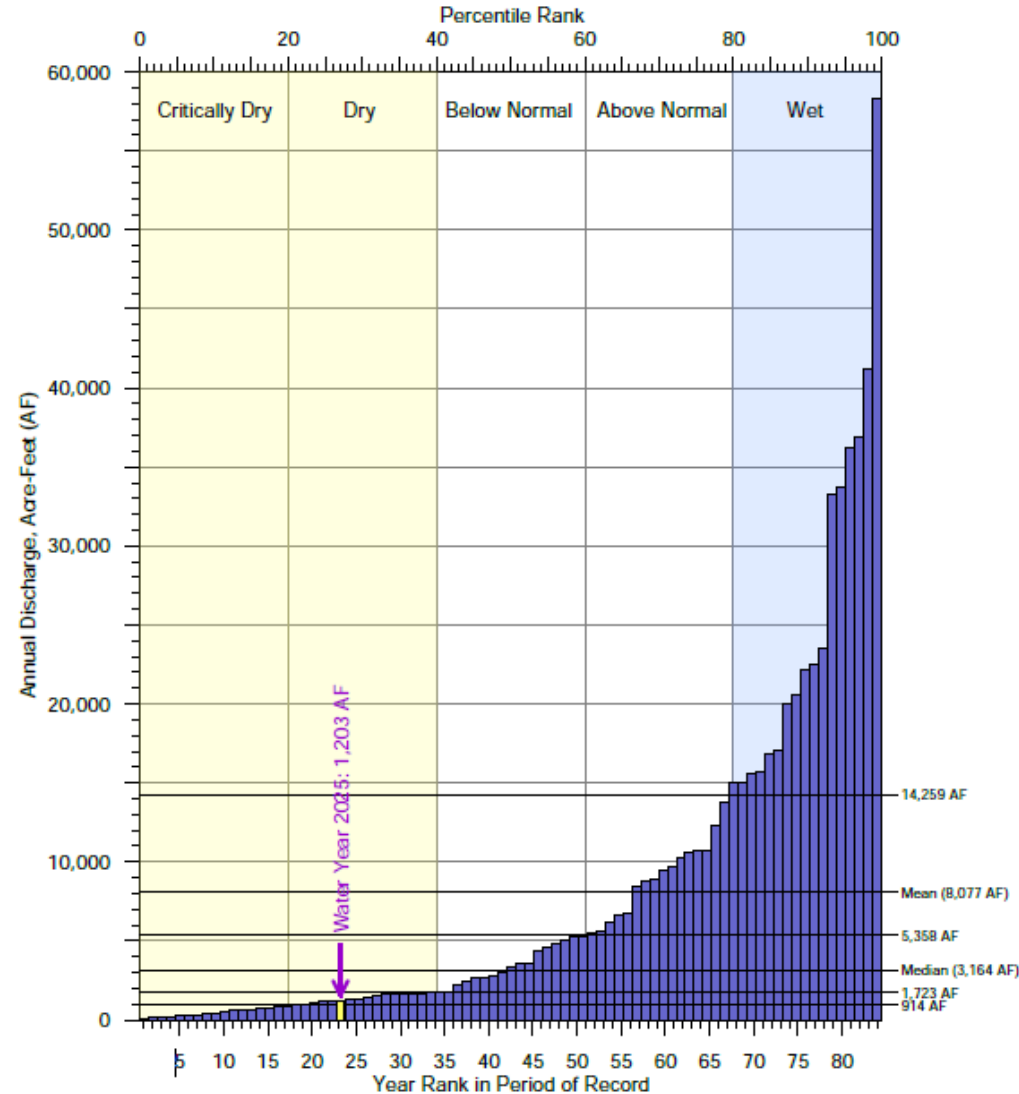
8 Appendices

WY2025 Hydrologic Year Type

- First Dry/ Below Normal year in the Basin following two wet years (2023 and 2024)
 - Creek flows ranked in low 20-30th percentile.
 - EMA precipitation below 50% of Average (7in vs 16 in)
 - Determinations per area: WMA/CMA Dry Year; EMA Below Normal



SANTA YNEZ RIVER ANNUAL FLOWS
11132500 SALSIPUEDES CREEK NEAR LOMPOC
PERIOD OF RECORD (WY 1942 - 2025)



WY2025 Groundwater Pumping

*Joint Table 4-1
WY 2025 Groundwater Extraction Data,
by GSA, in Acre-Feet*

GSA	WMA		CMA	EMA	Basin-Wide (Total AF)
	Upper Aquifer (AF)	Lower Aquifer (AF)	Buellton Aquifer (AF)	Total (AF)	
Domestic Water Use	80	220	280	1,637	2,217
Agricultural Water Use	14,270	3,230	1,920	9,662	29,082
Municipal Water Use	3,770	1,930	670	1,683	8,053
Total Groundwater Water Use	18,120	5,380	2,870	12,982	39,352

The estimated long-term sustainable yields of the WMA, CMA, and EMA is estimated to be 26,500; 2,800; and 12,870 acre-feet per year (AFY), respectively per the respective 2022 GSPs.

WY2025

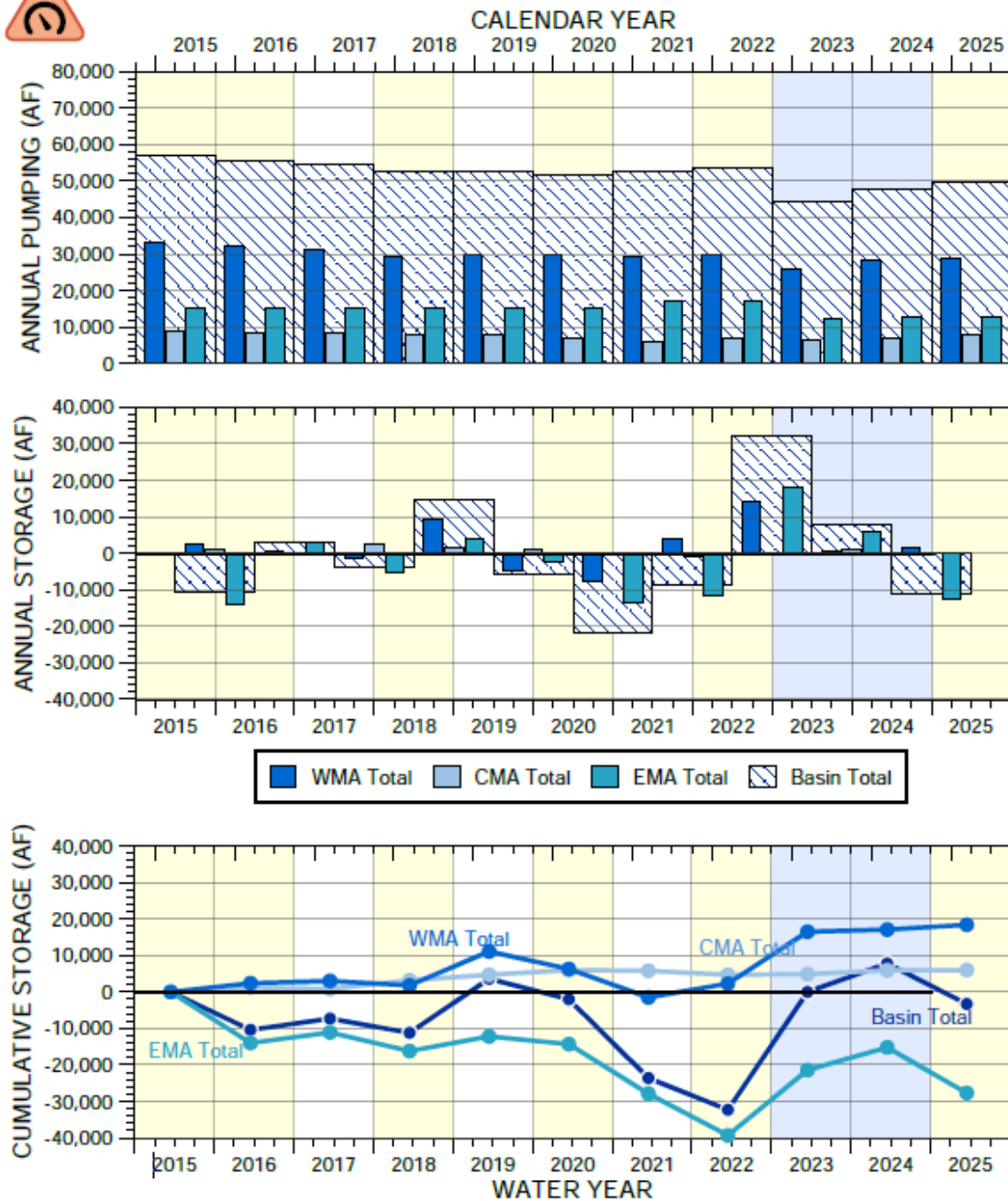
Change in Groundwater in Storage

*Joint Table 5-1
WY 2025 Change in Groundwater in Storage,
by GSA, in Acre-Feet*

GSA	WMA (AF)		CMA (AF)	EMA (AF)		Basin-Wide (Total AF)
	Upper Aquifer	Lower Aquifer	Buellton Aquifer	Paso Robles Formation	Careaga Sand	
WY 2025 Change	-700	2,100	100	-12,800	300	-11,000
Total Change Since 2015	13,300	5,100	6,000	-26,900	-800	-3,300

Numbers are rounded to the nearest 100 AF.

All three GSAs report that conditions within their domains continue to meet sustainability goals with no undesirable results during WY 2025.

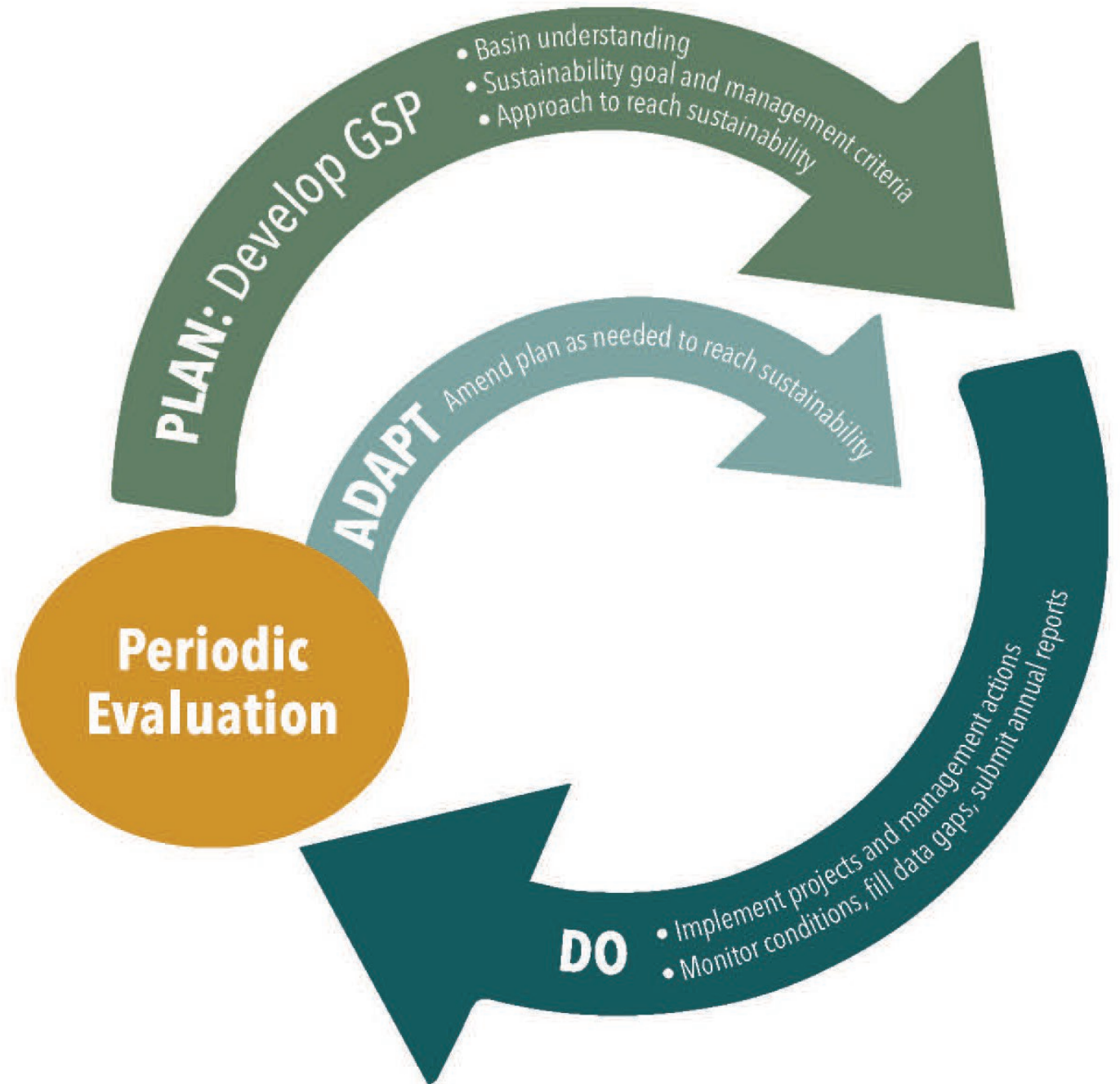


Portion of Sustainable Groundwater Management Act Statute and Regulations Specific to Annual Report Requirements. Effective August 15, 2016.
(ARTICLE 7. § 356.2. Annual Reports. B.5.b)

(B) A graph depicting water year type, groundwater use, the annual change in groundwater in storage, and the cumulative change in groundwater in storage for the basin based on historical data to the greatest extent available, including from January 1, 2015, to the current reporting year.

5- year Periodic Evaluation

- **PLAN:** The WMA, CMA, and EMA each developed a GSP and submitted on January 18, 2022
 - DWR accepted each GSP on January 18, 2024
- **DO:** Now we implement projects and management actions, monitor conditions, fill data gaps, and submit annual reports
- **ADAPT:** Future periodic evaluation
 - Address Seven Recommendations by DWR Staff



Next Steps

- **Continue working on Projects and Management Actions and filling Data Gaps in WYs 2026 and 2027**
- **Finish WY 2025 Annual Report for DWR submittal by April 1 2026**
- **Finish Admin Draft of Periodic Evaluation and begin public discussion of draft in Early 2026 in preparation for DWR submittal in January 2027**
- **The Periodic Evaluation will include an assessment of whether a Plan Amendment is needed. A key focus for this evaluation will be to address DWR's Recommended Corrective Actions.**

DWR Recommended Corrective Actions

“The recommended corrective actions identified in the Staff Report will assist the Department’s future review of the Plan’s implementation for consistency with SGMA and the Department therefore recommends the Agencies address them by the time of the Department’s periodic review, which is set to begin on January 18, 2027, as required by Water Code § 10733.8. Failure to address the Department’s recommended corrective actions before future, subsequent plan evaluations, may lead to a Plan being determined incomplete or inadequate.”

- DWR (2024) Statement of Findings regarding the Approval of the Santa Ynez River Valley Basin Groundwater Sustainability Plan

DWR Recommended Corrective Actions

RCA #	Summary Description
1	Implement Action Plan.
2	Provide additional analysis of principal aquifers and the physical relationship of the Santa Ynez River Alluvium with those principal aquifers.
3	Reevaluate water budget for consistency.
3.a	Develop a single water budget document for all three management areas.
3.b.1	Use the same time periods for all three management areas.
3.b.2	Explain how releases from Lake Cachuma are managed and influence the surface water and groundwater systems through each of the three management areas.
4	Reevaluate SMC for groundwater levels to include drought conditions, rather than typical conditions.
4.a	Revise SMCs and undesirable results to manage during drought conditions, not for typical conditions.
4.b	Revise SMC to be based on seasonal low groundwater levels.
4.c	Conduct a well impact analysis.
5	Reevaluate SMC for water quality.
5.a	EMA GSP should reevaluate the quantitative definition of undesirable results.
5.b	Assess GSA activities resulting in changes in water quality.
5.c	Revise SMCs and undesirable results to manage during drought conditions, not for typical conditions.
5.d.1	Clearly identify representative monitoring well.
5.d.2	Provide additional details and documentation for each water quality target and well.
6	Clarify quantitative definition of undesirable results for land subsidence
7	Review future guidance on ISW when available. Review SMCs for ISW.

RCA 1, 2, and 7 directly or indirectly deal with Interconnected Surface Water or “ISW” (Basin Conditions and Sustainable Management Criteria).

RCA 3 deals with water budget (Basin Conditions).

RCA 4, 5, 6, and 7 deal with Sustainable Management Criteria (SMC).

5-YEAR PERIODIC EVALUATION

- SECTION 1: INTRODUCTION
- SECTION 2: NEW INFORMATION COLLECTED
- SECTION 3: GROUNDWATER CONDITIONS
- SECTION 4: PROJECTS AND MANAGEMENT ACTIONS
- SECTION 5: BASIN SETTING
- SECTION 6: MONITORING NETWORKS
- SECTION 7: UNDESIRABLE RESULTS AND SUSTAINABLE MANAGEMENT CRITERIA
- SECTION 8: GSA AUTHORITIES AND ENFORCEMENT ACTIONS
- SECTION 9: COORDINATION, OUTREACH AND ENGAGEMENT
- SECTION 10: SUMMARY OF PROPOSED OR COMPLETED REVISIONS TO PLAN ELEMENTS

Questions?