

MEETING MINUTES

Groundwater Sustainability Agency for the Western Management Area in the Santa Ynez River Groundwater Basin August 26, 2020

A regular meeting of the Groundwater Sustainability Agency (GSA) for the Western Management Area (WMA) in the Santa Ynez River Groundwater Basin was held on Wednesday, 26 August 2020. As a result of the COVID-19 emergency and Governor Newsom's Executive Orders to protect public health by issuing shelter-in-home standards, limiting public gatherings, and requiring social distancing, this meeting occurred solely via teleconference as authorized by and in furtherance of Executive Order Nos. N-29-20 and N-33-20.

GSA Committee Directors Present: Chris Brooks, Meighan Diethofer (Acting as Alternate), Steve Jordan, Jim Mosby, Bruce Nix

Alternate GSA Committee Director Present: Art Hibbits, Katherine Stewart

Staff Present: Joe Barget, Bill Buelow, Loch Dreizler, Amber Thompson, Kristin Worthley, Matt Young

Others Present: Brian Bondy, Zoe Carlson (Dudek), Maygan Cline (GeoSyntec), Ken Domako, Curtis Lawler (Stetson Engineers), Tim Nicely (GSI), Anita Regmi (DWR), Charles Witt

I. Call to Order and Roll Call

GSA Committee Director Brooks called the meeting to order at 10:05 a.m. asked Mr. Buelow to call roll. Four Committee Directors and one Acting Alternate were present providing a quorum.

II. Introductions and Review of SGMA in Santa Ynez River Valley Basin

Mr. Buelow asked staff from all member agencies, consultants, WMA GSA CAG members and members of the public to announce their presence as phone attendees.

Mr. Buelow reviewed history of the Sustainable Groundwater Management Act (SGMA) requirements and what has been completed so far in the Santa Ynez River Basin including the creation of the three Groundwater Sustainability Agencies (GSAs) in the Basin (EMA, CMA, WMA), securing Department of Water Resources (DWR) Prop. 1 Grant (Grant) funding, hiring Consultants, coordinating efforts between the eight agencies participating in the three GSAs, and establishing a Citizen Advisory Group (CAG) in each of the Management Areas of the Basin.

III. Additions or Deletions, if any, to the Agenda

No additions or deletions were made. A request to change order to move Item XII before Item IV was approved.

IV. Public Comment

Mr. Bill Buelow introduced correspondence received on July 31, 2020 from the Santa Ynez Water Group referred to under Item XII of the agenda. The group is currently comprised of over 47 landowners representing thousands of acres located in all three management areas of the Basin.

Mr. Brian Bondy spoke on behalf of the Santa Ynez Water Group. The Group was created to serve landowners and engage with GSA Directors and Member Agency staff and leverage GSA outreach to landowners in the Basin. The group has grown since the letter was sent and now currently represents landowners of over 10,000 acres.

V. Review and Consider Approval of Minutes

GSA Committee Director Brooks submitted the minutes of the meetings of May 20, 2020 for GSA Committee approval.

GSA Committee Director Jordan made a MOTION to approve the minutes as received. GSA Committee Director Mosby seconded the motion and it passed unanimously by Roll Call vote.

VI. Receive WMA GSA financial update and approve WMA Warrant Lists

Mr. Buelow presented the financial reports of FY 2019-20 Periods 10 through 12 (through June 30, 2020) and the Warrant Lists for April, May, June and July 2020 for GSA Committee review. Discussion followed.

GSA Committee Director Jordan made a MOTION to approve the April, May, June and July 2020 Warrant Lists (Nos. 1011 – 1018) totaling \$170,532.01 and financial reports as submitted. GSA Committee Director Brooks seconded the motion and it passed unanimously by Roll Call vote.

VII. Receive update and memo from WMA Citizen Advisory Group

Mr. Charlie Witt presented a Memorandum dated August 26, 2020 and gave an update on the WMA Citizen Advisory Group (CAG) activities. The WMA CAG meeting of June 3, 2020 was cancelled due to lack of quorum. The WMA CAG met again on June 25, 2020 via teleconference to review the Draft Technical Memorandum (TM) for Regional Geology and 3D Geologic Model for the Santa Ynez River Valley Groundwater Basin and the Draft Phase 1 TM for Data Compilation for the Santa Ynez River Groundwater Basin Data Management System (WMA and CMA). The WMA CAG provided comments on both documents to staff and consultants for consideration in the final versions.

Discussion followed. There was no public comment.

VIII. Receive Staff Memo and Overview on Adjustments to Management Area Boundaries

Mr. Buelow presented a Memorandum dated August 2020 regarding Management Area Boundary Modifications. He explained the slight shift in internal boundaries.

The CMA-EMA proposed internal boundary change was based on a request from the City of Solvang and a further analysis of parcel boundaries and hydrogeologic information. The revised boundary does not split any parcels and follows a topographic and geologic break at the base of Skytt Mesa.

The proposed change to the CMA-WMA boundary is based on an analysis of the hydrologic and hydrogeologic data by Stetson Engineers. It aligns the Management Area boundary with surface water drainage, the local topography and hydrogeology; encloses a large portion of the Careaga formation within the CMA, which aids in calculations for the water budget; aligns the boundary to the SYRWCD boundary in the Santa Rita and Buellton uplands; shortens the boundary between the WMA and CMA which will simplify water budget calculations; and moves the boundary at the Santa Ynez River nearer to a former USGS gauge location and a bedrock high. The new boundary is less arbitrary and will make the calculation of groundwater and surface water flux between the CMA and WMA easier to quantify.

He further clarified that all parcels included in these internal boundary changes were previously part of a GSA in this Basin. No additional land is subject to SGMA as a result of the changes therefore it is not considered a material change by DWR.

There were no questions or comments.

GSA Committee Director Jordan made a MOTION to endorse the proposed boundary changes. GSA Committee Director Mosby seconded the motion and it passed unanimously by Roll Call vote.

IX. Receive update on GSP activities in the WMA and Basin

Ms. Cline (Geosytec Consultants), along with Zoe Carlson (Dudek) and Curtis Lawler, (Stetson Engineers), presented an update on the consultants GSP activities in the WMA GSA since the last GSA Committee meeting in May 2020, a SGMA and GSA overview, GSP timeline and milestones and consultant team progress. The presentation also provided a review of the Draft Technical Memorandum of 3D Geologic Model for the Santa Ynez River Valley Groundwater Basin, community outreach and engagement, Draft Technical Memorandum of Data Compilation and Management, Hydrogeologic Conceptual Model, Water Budget, Groundwater Conditions and Groundwater Model. The consultants reviewed newly initiated work, ongoing activities and the next steps to create a SGMA compliant GSP for the WMA GSA.

There was public comment, GSA Committee Member, consultant and staff discussion following the presentation.

- Committee Director Mosby asked if the project schedule/timeline and milestones are on track. Ms. Cline confirmed the schedule is on track with additional special meetings being added to the Timeline. He requested more in-depth milestones to show if tasks are ahead, on-time or behind schedule. Mr. Buelow assured that the work is on track and will share the detailed schedule chart with Committee Directors.
- Committee Director Mosby asked if Durbin Model is being considered in the data and why is Groundwater Model only referencing data beginning in 1982. Ms. Cline confirmed that data from the Durbin Model is being used and referenced as part of “existing data”. Mr. Curtis Lawler (Stetson Engineers) explained that the period of 1982-2018 was chosen in an effort to coordinate with all three GSAs, matches up to pumping data available for all three GSAs from Santa Ynez River Water Conservation District, represents equal numbers of dry versus wet years and includes two critical drought periods.
- Committee Director Mosby asked if water quality is considered in the Groundwater Model. Mr. Lawler explained SGMA’s forward looking goal and will be considered and addressed in 2021 during public workshops.
- Mr. Joe Barget asked for clarification of HCM WMA Subareas versus previously published Subbasins used by other agencies. Ms. Cline explained the labeling of the Subareas as it is was initiated by official boundaries created by DWR. The details will be referenced in the Technical Studies being created by consultant team.
- Committee Director Jordan asked if recharge by the wastewater treatment plant is included. Ms. Cline confirmed those operations are considered as Return Flow in the Water Budget.
- Mr. Brian Bondy, Santa Ynez Water Group, expressed concern that the number of planned meetings seems too low particularly in 2021 and encourages committee to consider as much opportunity as possible for public input regarding sustainability goals.
- Mr. Brian Bondy asked if the Geologic Model Technical Memorandum considers earthquake faulting since it is not listed. Ms. Cline confirmed faulting is considered but faults are not currently shown in the Model. The CMA/WMA GSA consultant team is working with the EMA GSA consultant team for a unified model on faulting to account for major/minor and active/inactive faults and will be added to the final Geologic Model Technical Memorandum after all data has been collected and unified model agreed upon.

X. Receive Staff Update on Numeric Groundwater Model Task

Mr. Buelow informed the WMA GSA Committee that a change is required to the scope and budget of the Numeric Groundwater Model task due to a change in conditions surrounding the Durbin Groundwater Model. Consultants discovered that the software

platform used to originally create the Durbin Groundwater Model would not be supported throughout the SGMA process requiring the consultant team to reconstruct the Durbin Groundwater Model in coordination with Mr. Durbin in a supported software. The increased cost is estimated about \$100,000 to be determined. Draft order revisions are currently underway and will be presented to WMA GSA Committee and Member Agency staff at a later date.

Discussion followed. GSA Committee Directors Brooks and Jordan support revision to modflow task budget. No vote was needed or taken yet.

XI. Receive update on Aerial Electro-Magnetic Survey of WMA

Mr. Buelow announced Santa Ynez River Water Conservation District, on behalf of the CMA and WMA portions of the Basin, was awarded a \$296,000 grant with requirement of about \$100,000 to be spent by the CMA and WMA GSAs toward SkyTEM survey of the CMA and WMA. The project has been delayed due to COVID-19 travel restrictions as the crew is based out of Ontario, Canada. They are now allowed entry to the US and are beginning their work again. Staff is in communication with SkyTEM and are waiting for a firm date for operations. The survey will possibly occur in late September or October. Staff will proceed with public awareness campaigns including press releases, email blasts and physical mailer after the flight dates are confirmed.

Discussion followed.

XII. Received Correspondence

Correspondence received from the Santa Ynez Water Group was introduced and discussed during Public Comment.

XIII. Possible Special WMA GSA Meetings

Mr. Buelow announced there may be a need for Special Meetings of the WMA GSA Committee Meeting to review the Technical Memoranda. Discussion followed. The tentative dates are October 14 (1:00 – 3:00 pm) and/or October 21 (10:00 am – 12:00 pm), exact date, time and location TBD. Due to COVID-19 restrictions, it may be held via teleconference call.

XIV. Next Regular WMA GSA Meeting: Wednesday, November 18, 2020, 10:00 AM, location TBD

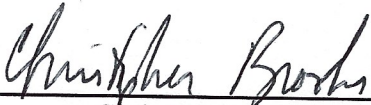
Mr. Buelow announced that the next WMA GSA Committee Meeting will be Wednesday, November 18, 2020, 10:00 AM, location TBD. Due to COVID-19 restrictions, it may be held via teleconference call.

XV. WMA GSA Committee requests and comments

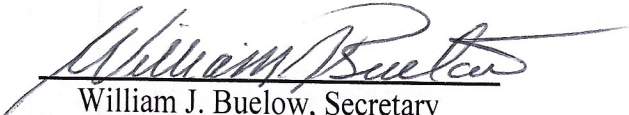
There were no requests or comments.

XVI. Adjournment

GSA Committee Director Brooks adjourned the meeting at 12:13 p.m.



Chris Brooks, Chairman



William J. Buelow, Secretary

**GROUNDWATER SUSTAINABILITY AGENCY FOR THE WESTERN MANAGEMENT AREA (WMA)
IN THE SANTA YNEZ RIVER VALLEY GROUNDWATER BASIN**

APRIL 2020 WARRANT LIST FOR COMMITTEE APPROVAL

<u>NUMBER</u>	<u>DATE</u>	<u>PAYEE</u>	<u>DESCRIPTION</u>	<u>AMOUNT</u>
1011	04/08/20	Santa Ynez River Water Conservation District	1/3 of GSA Member Agency Account Tracking setup & GoDaddy "SantaYnezWater.org" 1 year domain	\$ 228.73
1012	04/08/20	Stetson Engineers	February 2020 Engineering Service (Task Order #1)	\$ 22,197.92
1013	04/08/20	Valley Bookkeeping	FY 2019-20 3rd Quarter Bookkeeping (January, February, March 2020)	\$ 150.00
MONTH TOTAL				\$ 22,576.65

MAY 2020 WARRANT LIST FOR COMMITTEE APPROVAL

<u>NUMBER</u>	<u>DATE</u>	<u>PAYEE</u>	<u>DESCRIPTION</u>	<u>AMOUNT</u>
1014	05/12/20	VOID	VOID	\$ -
1015	05/12/20	Stetson Engineers	March 2020 Engineering Service (Task Order #1)	\$ 73,820.05
MONTH TOTAL				\$ 73,820.05

JUNE 2020 WARRANT LIST FOR COMMITTEE APPROVAL

<u>NUMBER</u>	<u>DATE</u>	<u>PAYEE</u>	<u>DESCRIPTION</u>	<u>AMOUNT</u>
1016	06/15/20	Stetson Engineers	April 2020 Engineering Service (Task Order #1)	\$ 27,581.79
MONTH TOTAL				\$ 27,581.79

TOTAL THIS QUARTER: \$ 123,978.49

**GROUNDWATER SUSTAINABILTY AGENCY FOR THE WESTERN MANAGEMENT AREA (WMA)
IN THE SANTA YNEZ RIVER VALLEY GROUNDWATER BASIN**

JULY 2020 WARRANT LIST FOR COMMITTEE APPROVAL

<u>NUMBER</u>	<u>DATE</u>	<u>PAYEE</u>	<u>DESCRIPTION</u>	<u>AMOUNT</u>
1017	07/13/20	Stetson Engineers	May 2020 Engineering Service (Task Order #1)	\$ 46,403.52
1018	07/13/20	Valley Bookkeeping	FY 2019-20 4th Quarter Bookkeeping (April, May, June 2020)	\$ 150.00
				<hr/>
MONTH TOTAL * \$				46,553.52
				* FY 19-20

WESTERN MANAGEMENT AREA
CITIZEN ADVISORY GROUP
MEMORANDUM

DATE: August 26, 2020
TO: WMA GSA Committee
FROM: WMA Citizen Advisory Group
SUBJECT: June Meetings to Discuss Newsletter and Two Technical Memoranda

Western Management Area (WMA) Citizens Advisory Group (CAG) Members:

CAG Members in attendance June 3: Karen Kistler, and Derek McLeish. The meeting was cancelled due to lack of quorum.

Staff and Consultants in attendance June 3: Joe Barget (VVCSD), Bill Buelow (SYRWCD), Maygan Cline (Geosyntec), Curtis Lawler (Stetson), Kristin Worthley (City of Lompoc), and Matt Young (County of Santa Barbara).

CAG Members in attendance June 25: Jose Baer, Ken Domako, Karen Kistler, Derek McLeish, and Charles Witt

Staff and Consultants in attendance June 25: Joe Barget (VVCSD), Bill Buelow (SYRWCD), Maygan Cline (Geosyntec), Miles McCammon (Stetson), Kristin Worthley (City of Lompoc), and Matt Young (County of Santa Barbara).

Purpose

The WMA GSA Committee requested staff for the GSA agencies to coordinate meetings of the WMA CAG. Through a coordinated effort, the CAG scheduled two meetings via teleconference due to the COVID-19 restrictions. The June 3, 2020 meeting was scheduled to discuss the Draft SGMA Newsletter. However, that meeting did not have a quorum and was cancelled. Comments on the newsletter were then requested via email to accommodate the dealing for distributing the newsletter with eight agencies. No substantive comments were received.

A second meeting was held on June 24, 2020 to review the Draft Technical Memorandum (TM) for Regional Geology and 3D Geologic Model for the Santa Ynez River Valley Groundwater Basin and the Draft Phase 1 TM for Data Compilation for the Santa Ynez River Groundwater Basin Data Management System (WMA and CMA). The two TMs were prepared by the Stetson

Engineer's team. A copy of the documents was made available to the CAG prior to the meeting at www.SantaYnezWater.org.

Comments on Draft Technical Memorandum on Regional Geology and 3D Geologic Model for the Santa Ynez River Valley Groundwater Basin

- The CAG asked about coordination with neighboring basins and a discussion about the only other basin is San Antonio to the north, which is separated from the CMA and WMA by bedrock.
- The CAG discussed the number of wells used by Vandenberg AFB, and which aquifers their wells were screened and how much groundwater was pumped from their wells.
- The CAG asked that Highways 1 and 246 are added to Figures 2, 5 and 6 for orientation purposes.
- CAG requested that legend is revised to be arranged in geologic order on Figures 5 and 6.
- The CAG with Staff discussed how professional judgement in evaluating discrepancies was done. Discussion ensued.
- CAG pointed out that the second paragraph on page 13 (after the bullets) could be rewritten to be clearer.
- CAG requested that geologic symbols for units and contacts between units are added to Figure 2.
- CAG requested that symbols are added to stratigraphic columns and a symbol to differentiate between consolidated and unconsolidated units.
- Karen Kistler liked the idea of using AEM to close data gaps and was very happy to see that the consultants were using Leapfrog to model the geology. Karen was familiar with the software and it is used by IMERYYS. Karen also appreciated that Dibblee was cited throughout the document.
- Derek McLeish also supported using AEM to close data gaps and commented that the Tech Memo was very rigorous and professional.

Comments on the Draft Phase 1 TM for Data Compilation for the Santa Ynez River Groundwater Basin Data Management System (WMA and CMA):

- The CAG asked about there being one or two Databases for the WMA and CMA. Staff clarified there is one data base for the CMA and WMA, but the data is separated within it.
- There was a discussion about what "significant and unreasonable" means pertaining to SGMA.
- The CAG discussed static vs. time series data and data types.
- The CAG discussed what is in the Library of reports and the ability for public to contribute data or studies to the Library.
- The CAG members were asked to give specific comments however, the CAG members have mostly praise for the volume of data entered by the consultants.

Note: The WMA CAG did not provide comments on the SGMA Newsletter.

SANTA YNEZ RIVER VALLEY GROUNDWATER BASIN

Mailing Address: P.O. Box 719
Santa Ynez, CA 93460
Phone: (805) 693-1156

MEMORANDUM

DATE: August, 2020

TO: WMA, CMA and EMA GSA
Committees

FROM: GSA Agency Staff

SUBJECT: Management Area Boundary Modifications

Background

This memorandum describes proposed changes to the internal boundaries of the three management areas (MA) in the Santa Ynez River Valley Groundwater Basin¹ (SYRVGB). The proposed changes to the CMA-EMA boundary are based on a request from the City of Solvang and a further analysis of parcel boundaries and hydrogeologic information. The proposed changes to the CMA-WMA boundary are based on an analysis of the hydrologic and hydrogeologic data by Stetson.

The two consultant teams coordinated together on the proposed changes. Agency Staff from all eight agencies in the Basin reviewed the proposed boundary changes. As the Groundwater Sustainability Plans (GSP) and associated technical memoranda are currently being prepared, the timing of the proposed changes will allow the consultants to proceed with preparing the GSP figures with the new boundaries. The proposed changes are shown in Figures 1 and 2. No changes to the DWR Bulletin 118¹ basin boundaries are proposed herein. None of the proposed changes are considered “material changes” as defined by DWR. Table 1 below summarizes the

¹ The extents of the SYRVGB were determined by the Department of Water Resources in Bulletin 118 (“DWR”) and are based on regional geology studies. The SYRVGB is identified as California basin 3-15.

total acres of the SYRVGB and MAs based on original boundaries and proposed revised boundaries.

Table 1. Area Within Original and Revised Boundaries of the WMA, CMA and EMA (Acres)

	Area within Original Boundaries (Acres)	Area within Revised Boundaries (Acres)	% change
Western Management Area (WMA)	85,300	85,600	0%
Central Management Area (CMA)	21,200	21,000	1%
Eastern Management Area (EMA)	96,500	96,400	0%
Total Santa Ynez River Valley Groundwater Basin	203,000	203,000	0%

Proposed Change to CMA-EMA Internal Boundary

The proposed change to the CMA-EMA boundary adjusts the existing boundary between the CMA and EMA to align with parcel and hydrogeologic boundaries. This change is based on updated Santa Barbara County Assessor parcels maps. Additionally, the existing MA boundary split several parcels. The revised boundary does not split any parcels and follows a topographic and geologic break at the base of Skytt Mesa, on the western side of the City of Solvang. The new boundary coincides with the contact between several geologic units which will simplify water budget calculations. All parcels included in the boundary change were previously part of a GSA. No additional land is subject to the Sustainable Groundwater Management Act (SGMA) as a result of the boundary change, therefore not considered a material change by DWR. Figure 1 shows the original and draft proposed boundary between the CMA-EMA.

Proposed Change to WMA-CMA Internal Boundary

The proposed change to the WMA and CMA boundary is based on the following:

- 1) Aligns the MA boundary with the surface water drainage, the local topography and hydrogeology.
- 2) Encloses a large portion of the Careaga formation within the CMA, which aids in calculations for the water budget.

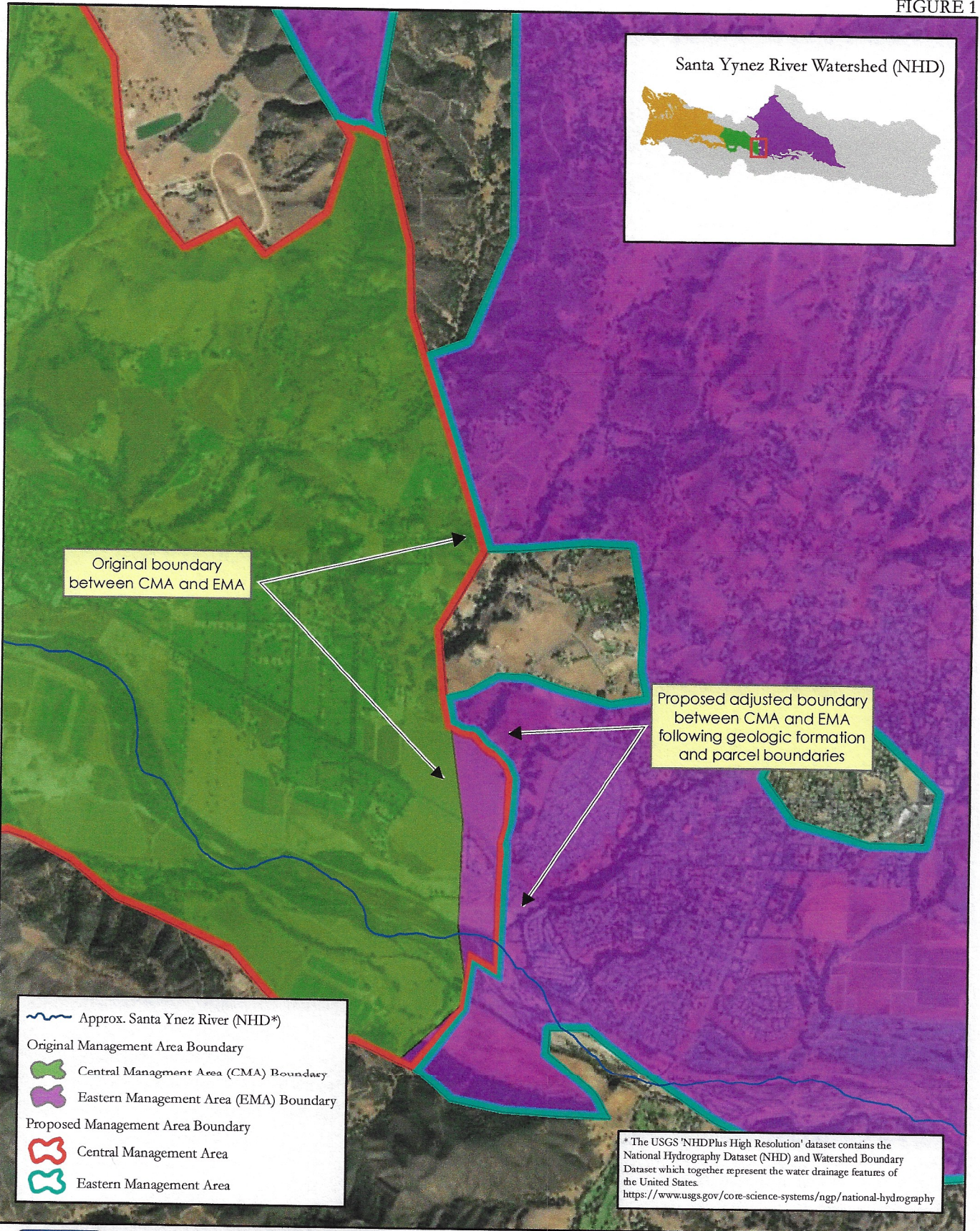
- 3) Aligns the WMA-CMA GSA boundary to the SYRWCD boundary in the Santa Rita and Buellton Uplands.
- 4) Shortens the boundary between the WMA-CMA, which will simplify water budget calculations.
- 5) Moves the MA boundary at the Santa Ynez River near to a former USGS gauge location (ID 11131000) and a bedrock high. The new boundary is less arbitrary than the previous boundary and will make the calculation of groundwater and surface water flux between the CMA and WMA easier to quantify.

Figure 2 shows the original and draft proposed boundary between the WMA-CMA. All parcels included in the boundary change were previously part of a GSA. No additional land is subject to the Sustainable Groundwater Management Act (SGMA) because of the proposed boundary change, and therefore not considered a material change by DWR.

Once the GSAs have concurred with the change, Staff will formerly update the Geographic Information System (GIS) files and upload the revised GIS files to DWRs SGMA Portal with a letter documenting the changes.

Staff recommendation: Staff recommends that the WMA, CMA and EMA GSAs endorse the proposed boundary changes.

FIGURE 1



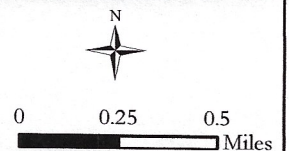
Document Path: F:\jia2710\Draft_BoundaryEdits_CMA_EMA_20200731.mxd



DRAFT
7/31/2020

**PROPOSED BOUNDARY ADJUSTMENTS
CENTRAL AND EASTERN MANAGEMENT AREAS**

Proposed adjusted boundary between CMA and EMA following geologic water-bearing formation boundary and parcels; No exterior DWR Bulletin 118 boundaries are changed.



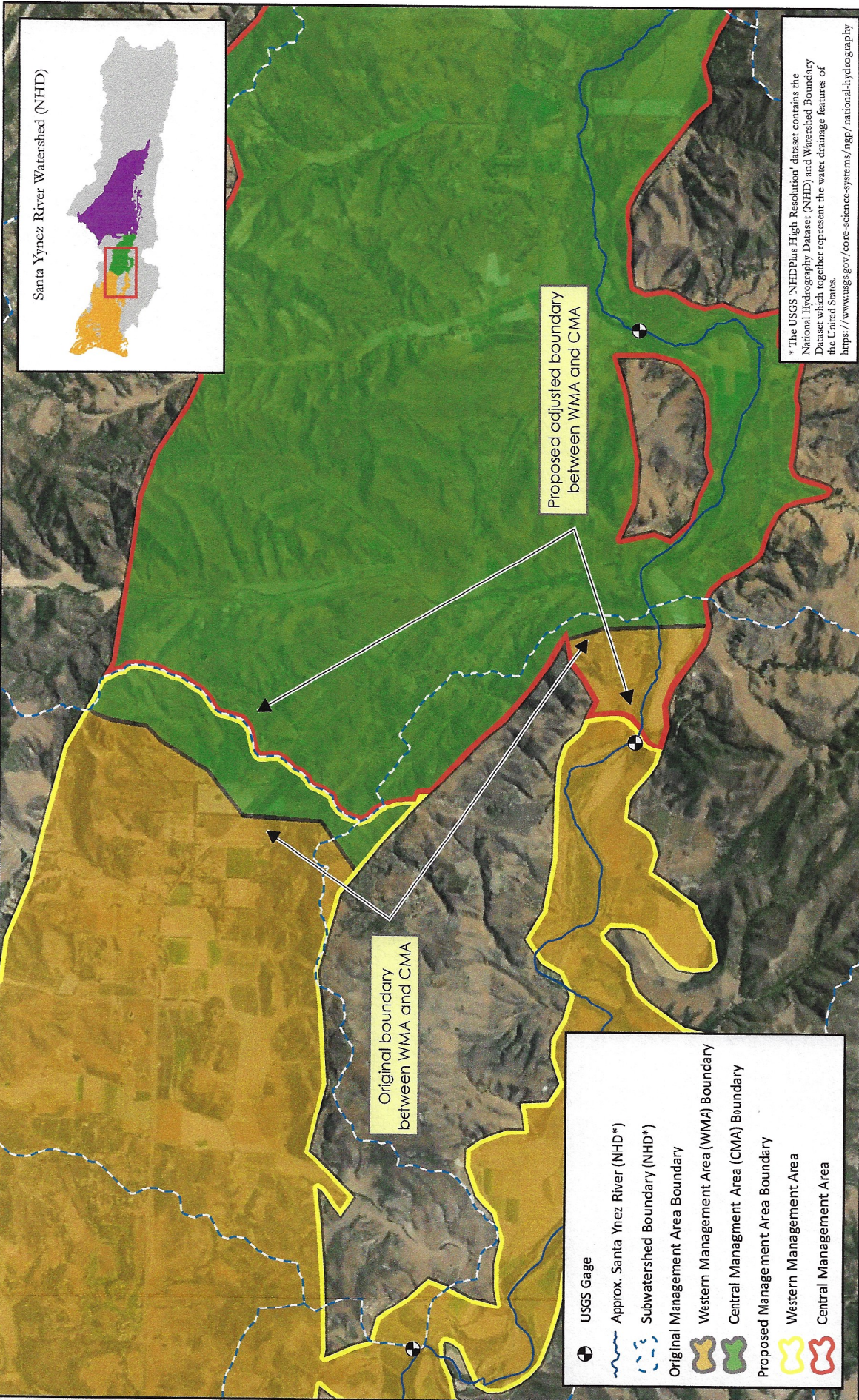


FIGURE 2

N

0 0.5 1 Miles

PROPOSED BOUNDARY ADJUSTMENTS CENTRAL AND WESTERN MANAGEMENT AREAS

This map proposes that internal management area boundaries within the Santa Ynez River Groundwater Basin be redrawn to follow watershed boundaries more accurately and to utilize a historical USGS gage locator; no exterior DWR Bulletin 118 boundaries are changed.

DRAFT
7/31/2020

STETSON
ENGINEERS INC.